

# People Movers 'Trams'

## ***MOVING PEOPLE TOWARDS THE FUTURE***



Australian Electric Vehicles can provide a cost effective, eye-catching, and functional solution to your transportation requirements. Trams have the advantage of increased capacity because the prime mover carries people. Also, it allows for increased external area for themes etc.

Our vehicles are constructed with durability, versatility and performance in mind, and use Australian parts, where possible, for cost efficiency in maintenance and production.

Our vehicles are fitted with brand-new state-of-the-art EFI engines running on either standard petrol/gasoline, or converted to natural gas or LPG. Some models are also available in diesel powered engines where high power is required in rugged terrain.

Our vehicles are also designed and manufactured in Australia to the applicable standards and many can obtain conditional registration by the relevant Australian Authorities.

*Proudly Australian owned and manufactured.*

## INTRODUCTION

Australian Electric Vehicles built its first Trackless Train in 1983. Since then, the company has built and commissioned over 80 units around Australia and overseas. Almost all units including the original unit are still in service today.

*Meet the demands  
of any people  
moving job.*

Since 1983, we have extended our range of vehicles to include the multi-purpose tram based people movers.

The trams come in two basic configurations, a small and a larger model. Both are basically the same design but have different carrying capacities. Trams and other people moving systems are proving more and more popular, and the variety of sites in which they are utilised is growing each year. Such as, Botanical Gardens, Tourist sites, Shopping centres, Amusement and Theme Parks, Hotels and Resorts, Hospitals, and in fact, any area where people congregate and need transportation other than mainstream transportation needs.

Over the years Australian Electric Vehicles have designed and built people moving systems to reflect the client's need including the particular "theme" or image that is desired for the site.

The company's product range caters for most requirements with the options of LPG/Natural gas, petrol, diesel or electric motive power to provide cost-effective transport, and in many cases, generating income for the client.

Australian Electric Vehicles prides itself on the quality and reliability of its products which have proven themselves through the test of time.

All vehicles have a full manufacturer's warranty for parts and workmanship for a period of 12 months from the date of purchase.



## STANDARD FEATURES

All our trackless train vehicles are constructed with a rugged steel frame chassis made with Australian RHS steel to take the demands of large payloads and tough commercial applications.

Our vehicles are built with the latest model brand new Hyundai petrol/diesel engines sized to suit your particular needs. Therefore, you can carry/pull more people per pay-load for longer, thus reducing your operational costs.



The vehicle comes in two basic configurations, a smaller 12 or 15 seats/carriage unit and the larger 24 seats/carriage unit.

to allow you to adapt a solution to meet your specific people moving requirements.

If a standard Series train is not suitable, please ask for a custom solution to suit your

individual needs.

All vehicles are normally trimmed with aluminium or fibreglass body work (not plastic) for strength and durability. All seats, canopies, and drop-sides are made from UV resistant materials for long life, where possible.

All trams are normally speed limited to 8-10 km/hr for driver, passenger, and pedestrian safety.

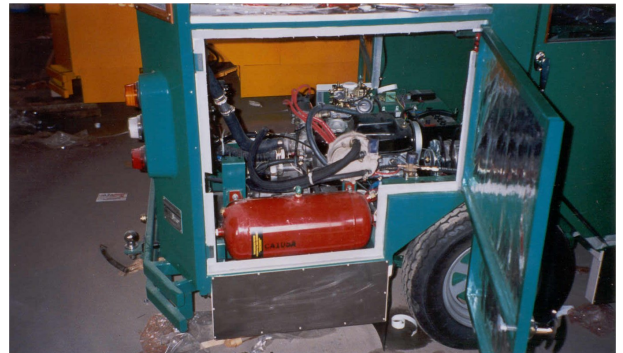
*Performance & Safety  
are fully integrated as  
standard.*

# MODELS TO SUIT MOST REQUIREMENTS

## MICRO-TRAM

The micro-tram is powered by 1600cc—2000cc water-cooled petrol engine and optionally converted to either LPG gas or Natural gas (LPG conversion certified to Australian and International Standards).

The transmission is an automatic gearbox with park locking and neutral safety switch. The drive train is through an additional 4:1 reduction driving through a universal shaft fitted with CV joints to a rear-differential final drive unit of 4:1 reduction. The vehicle uses hydraulic brakes on rear wheels with mechanical hand/park brake, and optional four wheels brakes are available.



The vehicle's frame/chassis is steel RHS with aluminium and fibreglass bodywork. The seating in the prime-mover & carriage can be fibreglass bench type with access doors on the LH side, RH side or both sides. The doors are fitted with drop-down acrylic windows and the floor is aluminium checker plate or rubber covered plywood.

A large fuel tank as either a replaceable 25 kg LPG gas cylinder for LPG operation, a fixed refillable Natural gas cylinder for Natural gas operation, or a 35 litre petrol tank for petrol operation is fitted which allows approximately 12 hours of operation under full load. Dimensions of the prime mover are 1400mm wide, 4600mm long and weighs approx 1100 Kg.

The Micro-tram prime-mover carriage seats 9 people plus luggage space, and can be used with either the 120B (carrying capacity 12 adults) or the 150B (carrying capacity 15 adults).

## LARGE-TRAM

The micro-tram is powered by a 2.8 Litre water-cooled diesel engine, or similar, with an automatic Transmission with park locking and neutral safety switch. The vehicle uses hydraulic brakes on all 4 wheels with mechanical hand/park brake on the rear for safety.



The chassis is a Toyota Coaster Chassis (or similar) with steel RHS with aluminium and fibreglass bodywork. The fuel tank will be as per fitted to the selected chassis.

Seating capacity is 21 adults in the prime mover and can be used with the 240B (carrying capacity 24 adults) carriage.

Dimensions of the prime mover are 2000mm wide, 7000mm long and weighs approx 2500KG.



## FULLY CUSTOMISABLE

If none of the models above suit your particular requirements, please contact us to discuss a custom solution to match your needs.





Postal:

PO Box 6012  
Minto Business Centre, NSW 2566

Factory:

Unit 3-4 / 11 Swaffham Road  
Minto, NSW 2566

Phone: +61 2 9820 1558

Fax: +61 2 9820 2995

E-mail: [sales@aev-hilite.com.au](mailto:sales@aev-hilite.com.au)



***Proudly Australian owned and manufactured.***

## MICRO-TRAM 120B CARRIAGE

The 120B seats 12 adults on bench seats with access doors on either the LH side, RH side or both sides. The doors are fitted with drop-down acrylic windows and the roof is fibreglass. The chassis is steel RHS painted, with steel RHS superstructure with aluminium & fibreglass body panelling. The floor is aluminium checker plate or rubber covered plywood. The brakes are electric on front 2 wheels of each carriage with "break-away" fail safe system. Four-wheel steering providing carriage self-tracking (Kingpin Ackerman is available as an option, and is recommended for speeds over 10km/hr). The suspension is leaf spring suspension with ball coupling with safety chain between each carriage. The dimensions are 1400mm wide, 4600mm long and weighs approx 700 Kg.

## MICRO-TRAM 150B CARRIAGE

The 150B seats 15 adults and is the same basic configuration as the 120B detailed above. The dimensions are 1400mm wide, 4900mm long and weighs approx 750 Kg.

## LARGE-TRAM 240B CARRIAGE

The 240B seats 24 adults on bench seats with access doors on either the LH side, RH side or both sides. The doors are fitted with drop-down acrylic windows and the roof is fibreglass. The chassis is steel RHS painted, with steel RHS superstructure with aluminium & fibreglass body panelling. The floor is aluminium checker plate or rubber covered plywood. The brakes are electric on all four wheels of each carriage with "break-away" fail safe system. Four-wheel steering providing carriage self-tracking (Kingpin Ackerman is available as an option). The suspension is leaf spring suspension with ring coupling with safety chain between each carriage. The dimensions are 2000mm wide, 7000mm long and weighs approx 1000 Kg (without wheelchair system) and approx 1500 Kg (with wheelchair system - last carriage only).

## FULLY CONFIGURABLE TO SUIT YOUR NEEDS

All trackless train series are fully customisable. Below are some of the common options:

- ✓ **PA system**, tape deck and amplifier.
- ✓ **Carriage speakers**, per carriage.
- ✓ **Light kit**: Headlight, taillights and indicator lights.
- ✓ **Wheel chair load platform**, hydraulic lift (rear carriage 180A Series only).
- ✓ **Wheel chair load platform**, manual lift (rear carriage 100A or 180A Series)
- ✓ **Four-wheel carriage braking**.
- ✓ **Air-conditioning**.
- ✓ **Carriage shock absorbers**.
- ✓ **LPG** (only applicable to Petrol/gasoline models).
- ✓ **Natural Gas** (only applicable to Petrol/gasoline models).
- ✓ **Fully Galvanized Frame** (per unit engine and carriages).
- ✓ **Seat Cushions**.
- ✓ **Speed Governor** – mandatory item for safety (set at 10 kph) .
- ✓ **Re-conditioned Engines** – are available in-lieu of brand new motors for the cost conscience. These are fully reconditioned engines.